

PACKAGED PUMP STATION

1200L POLYETHYLENE LIFTING PUMP STATIONS



INCLUDED:

- 1,200L Pump Station
- PE walkover lid (Class A)
- DNI100 invert seal
- Combination ball/swing check valve
- Camlock to pump and discharge manifold with flexible hose
- 6mm stainless steel lifting chain and 6mm stainless steel dee shackles
- 2" tank discharge fitted



Accredited as sewage management facilities by the NSW Ministry of Health

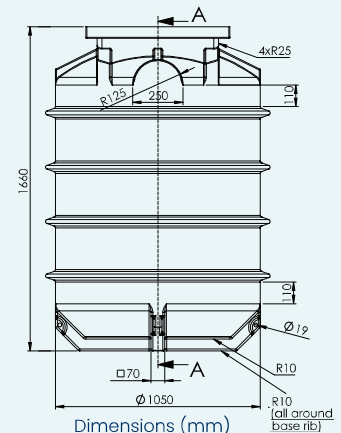
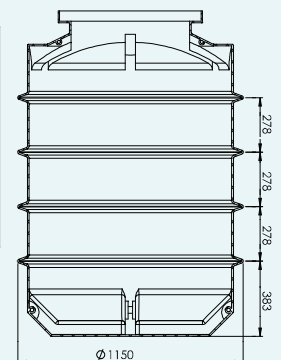
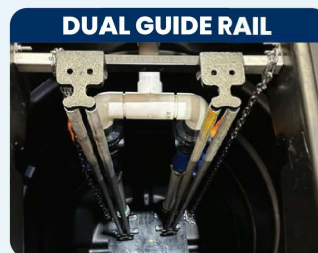
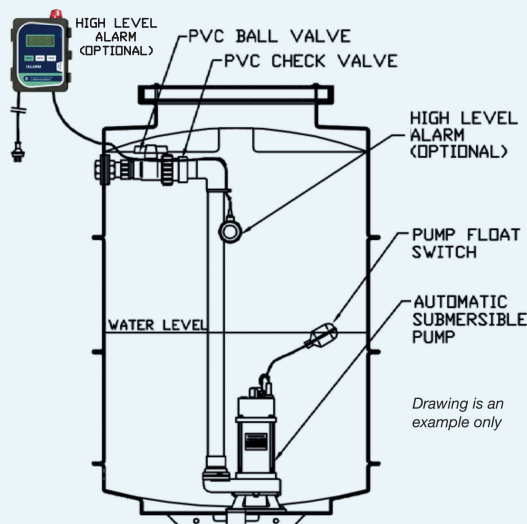
FEATURES:

- Polyethylene tank
- Inlet pipe to be installed by plumber
- Free-standing configuration for **vertical discharge pumps**
- Guide rail for **horizontal discharge pumps**
- Compatible with: single or dual pumps, grinder or vortex pumps
- All in-tank fittings incorporated in the packaged pump stations as follows:
 - Ball and non-return valves, barrel unions.
 - PVC interconnecting pipework

APPLICATIONS:

- Able to handle liquids such as storm water, trade waste, effluence and sewage
- Single dwellings
- Houses
- Pump-away applications
- Basement pump-away
- Civil developments
- Residential apartments
- Industrial complexes

Part Number	Item Code	Description
TO BE USED WITH VERTICAL DISCHARGE PUMPS ONLY		
BIA-1200-SF-PUMP-STATION	811281	1200L Single free-standing pump
BIA-1200-DF-PUMP-STATION	811282	1200L Dual free-standing pump
TO BE USED WITH HORIZONTAL DISCHARGE PUMPS ONLY		
BIA-1200-SG-PUMP-STATION	811283	1200L Single guide rail pump
BIA-1200-DG-PUMP-STATION	811284	1200L Dual guide rail pump



Disclaimer: Every effort has been made to publish the correct details in this brochure. No responsibility will be taken for errors, omissions or changes in product specifications.